

Technical Data

Design :	Pneumatic double-piston quarter turn actuator
Design features :	Rack-and-pinion system, piston guide via guide rods
Angle of rotation :	0°-135°
Air pressure supply :	mind. 2 bar, max. 8 bar
Operating medium :	Dry and filtered compressed air
Ambient temperature :	-25°C to +80°C
Mounting position :	any
Resistance to corrosion :	Industrial atmosphere
Lubrication :	Life time lubrication with grease ISO 51825-K2K-30
Seals :	NBR-O-Rings, 70 Shore
Coatings :	Housing anodized and colour sealed End caps - CED cathodic electrodeposition
Maintenance and inspection :	AMG actuators are free of maintenance within the life time. Provided that: <ul style="list-style-type: none"> • the actuator is properly mounted • the operating medium used is clean and non-aggressive • the actuator is operated under normal ambient conditions • the actuator is used in compliance with the intended use (see assembly and maintenance manual)
Applied standard:	DIN EN ISO 5211, DIN EN 15714-3, VDI / VDE 3845, DIN 79
Options:	Adjustable inner / outer travel stops up to +/- 5° via travel-stop-module (TSM) Ambient temperature up to +100°C Ambient temperature down to -40°C Sealing elements made of FKM (viton) or alternatively fluorosilicone Tailor made mounting kits and dimensioning acc. To customer requirements Variable cycle times (fast / slow) Variable sens of rotation (clockwise / counterclockwise) Coating options: Hard-Coat, chemical nickelplating, plastic coating, special lacquer



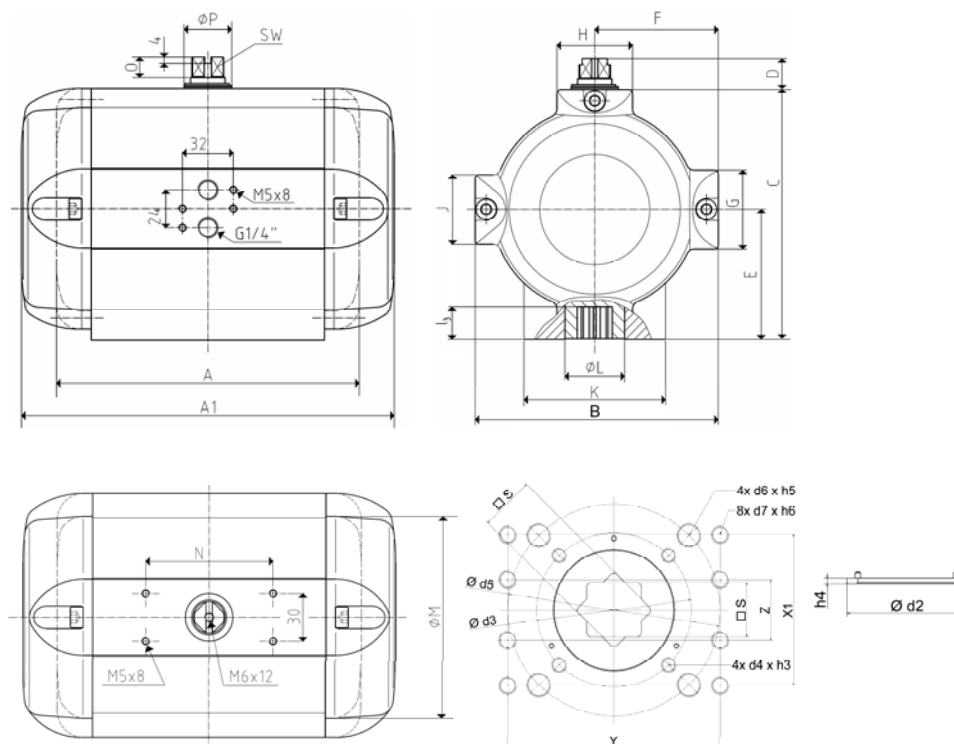
SAD - 135°

DOUBLE-PISTON QUARTER TURN ACTUATORS

TYPE BR16 SAD 135°

Size	42
Weight [kg]	49,7
Stroke volume [dm³]	25,3
Operating times [sec.] ¹⁾	
OPEN	3,8
CLOSE	3,8

1) operating times at 4,5 bar air pressure supply without load (standard values)



Type	air torque Ma [Nm] at operating pressure pe [bar]																	
	2 bar		2,5 bar		3 bar		3,5 bar		4 bar		4,5 bar		5 bar		5,5 bar		6 bar	
	MIN	MAX	MIN	MAX	MIN	MAX	MIN	MAX	MIN	MAX	MIN	MAX	MIN	MAX	MIN	MAX	MIN	MAX
SAD 42	536	694	852	1005	1161	1321	1475	1631	1789	1948	2098	2248	2398					

Design	SAD	
Size	42	
A (double-acting)	494	
A1 (single-acting)	-	
B	288	
C	296	
D	20	
E	146	
F	144	
G	84	
H	108	
K	150	
Ø L#	80	
J	84	
Ø M#	258	
N	80	
O	12	
Ø P#	63	
SW	30	
Connection ISO 5211	F14	F10
Ø d2#	100	-
h4	3	-
Ø d3#	102	
4x d4xh3#	4x M10x16	
Ø d5#	140	
l3#	40	
s	36	
4x d6xh5	4x M16x25	
8x d7xh6	8x M12x18	
Y	140	
Z	40	
W1	-	
X1	100	
G1	-	